



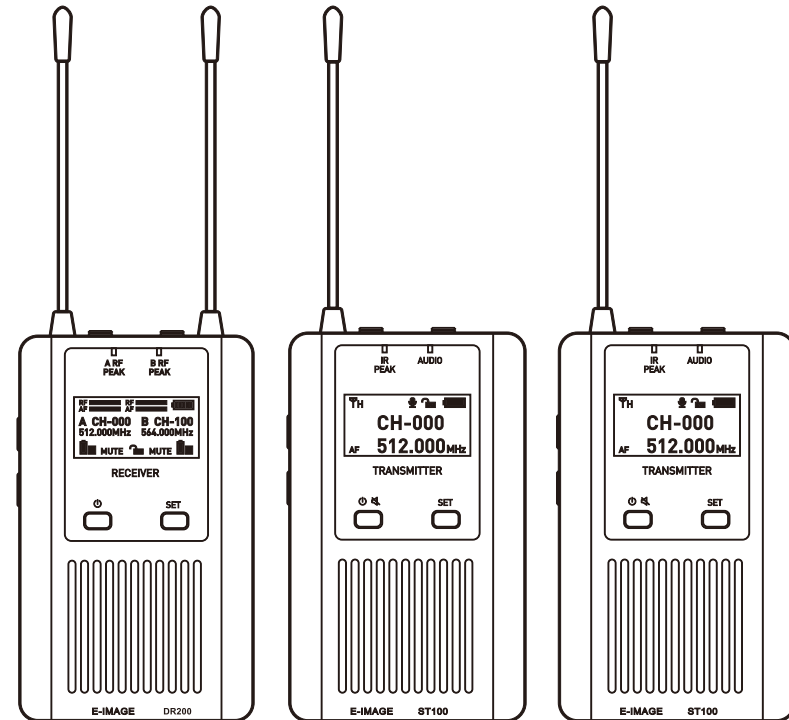
The magic life in the image world

# E-IMAGE

## MTR-10 (DR200+ST100+ST100)

### Dual-Channel Wireless Kit

SUPPORT YOUR IMAGE



#### NINGBO EIMAGE STUDIO EQUIPMENT CO., LTD

Add: No.1230 South Cihai Rd,Luotuo Industry zone, Zhenhai,

Ningbo, China. 315202

Tel:+86-574-86590031/86590061

Fax:+86-574-86590078

E-mail: sales@eimagevideo.com

Visit [www.eimagevideo.com](http://www.eimagevideo.com) for more information



E-IMAGE  
Official QR Code

[www.eimagevideo.com](http://www.eimagevideo.com)

Operating Manual 2024.3

---

## Contents

<b>Important Safety Tips</b>	2
<b>Standard Use</b>	2
<b>Packing List</b>	3
<b>Function Indication</b>	4
<b>Operating Instructions</b>	5-8
Operating Instructions DR200/ST100	
Receiver screen display	5-6
Battery display instructions	7
Back clip installation	7
Installation and use of cold shoes	7
Transmitter connection equipment	8
Receiver connection equipment	8
Paired transmitter attention	8
<b>Technical Data</b>	9
<b>Precautions</b>	10
<b>Warranty Card</b>	10

---

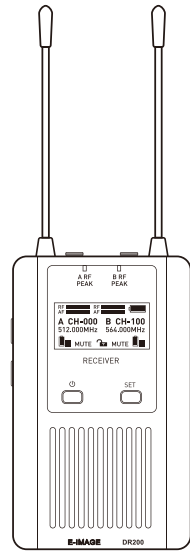
## Important Safety Tips

- First of all, thank you for choosing our products. Please read the guide carefully before using this product.
- Please keep the instructions properly. Please always give this product to other users together with the instructions.
- Please pay attention to all warnings and follow all instructions in the instructions.
- Clean the equipment with a soft cloth.
- Do not place the product near heat source, such as radiator, oven or other devices (including loudspeakers).
- Only use additional equipment and accessories matched by the original company.
- All maintenance work must be carried out by specially trained maintenance personnel.
- If the product is damaged in any form, such as liquid or foreign matter penetration or rain, can not work normally or accidentally fall, it must be maintained.
- Warning: do not use this product near water. Do not use the product in rain or wet environment. Otherwise, there is a risk of short circuit.

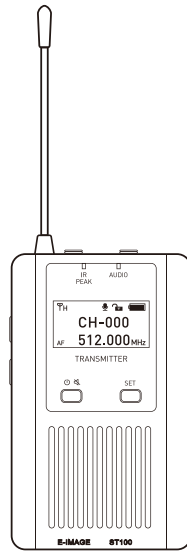
## Standard Use

- Read the instructions carefully, especially the "important safety tips" on this page
- Use the equipment only in accordance with the operating conditions in this instruction manual.
- If you do not use the equipment according to the instructions or do not comply with the working conditions in the instructions, it will be regarded as illegal use.

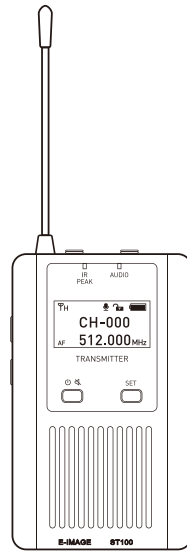
## Packing List



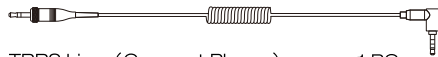
DR200 x 1 PC



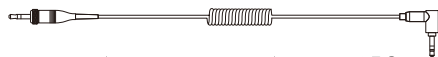
ST100 x 1 PC



ST100 x 1 PC



TRRS Line (Connect Phone) x 1 PC



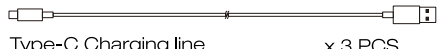
TRS Line (Connect Camera) x 1 PC



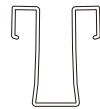
Clip Microphone x 2 PC



XLR Turn 3.5mm (Connect the mixer and other equipment) x 1 PC



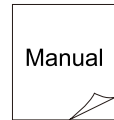
Type-C Charging line x 3 PCS



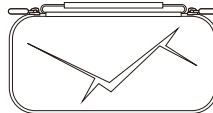
Back Clip x 3 PCS



Cold Boots x 1 PC



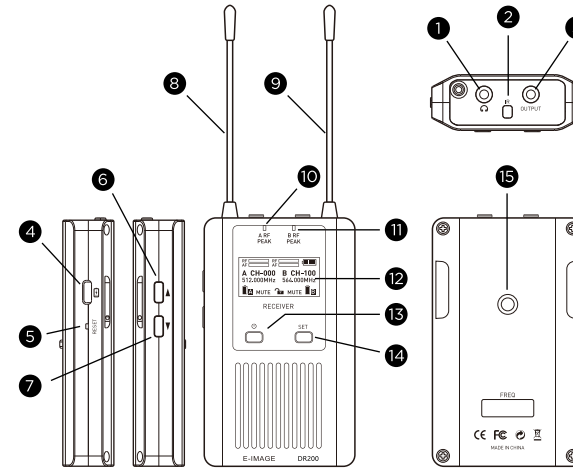
User Manual x 1 PC



Carrying Bag x 1 PC

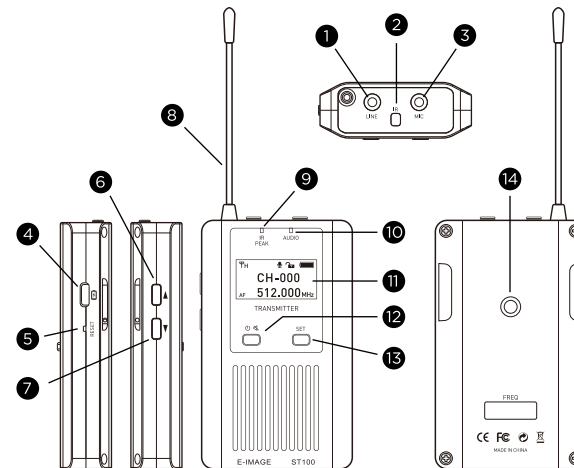
## Function Indication

### DR200



- 1 3.5mm Line Input Interface
- 2 Infrared Matching Window
- 3 3.5mm Microphone Input Connector
- 4 Type-C Charging Interface
- 5 Forced Shutdown Button
- 6 Up Button: Up Menu / Up Page
- 7 Down Button: Down Menu / Next Page
- 8 A Antenna
- 9 B Antenna
- 10 Radio Frequency Signal Indicator
- 11 Audio Indicator / Audio Peak Indicator
- 12 LCD Display
- 13 Switch Button
- 14 Set Button
- 15 1/4 Screw (Cold Shoe Accessories)

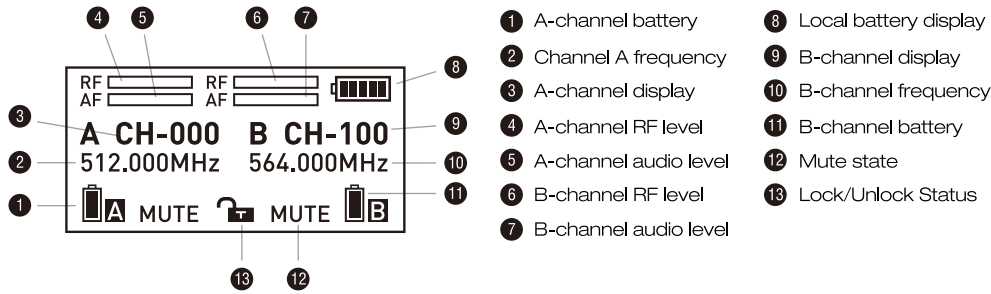
### ST100



- 1 3.5mm Line Input Interface
- 2 Infrared Matching Window
- 3 3.5mm Microphone Input Connector
- 4 Type-C Charging Interface
- 5 Forced Shutdown Button
- 6 Up Button: Up Menu / Up Page
- 7 Down Button: Down Menu / Next Page
- 8 Antenna
- 9 Audio Peak Light / Infrared Signal Light
- 10 Audio Indicator / Mute Light
- 11 LCD Display
- 12 Switch / Mute Button
- 13 Set Button
- 14 1/4 Screw (Cold Shoe Accessories)

# Operating Instructions

## DR200

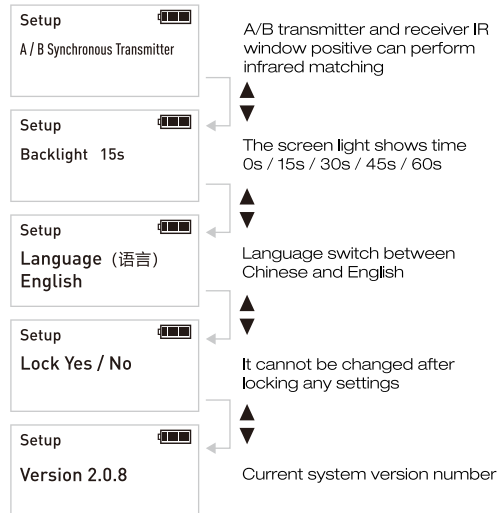
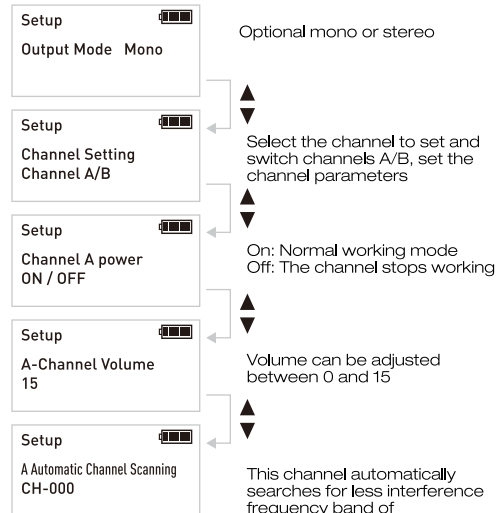


### Function Key Indication

SET Key	Homepage Long Press	A / B 100 Passageway
	Long Press	Enter the function adjustment menu
	Short Press	① Confirm the selected function ② Exit function adjustment menu

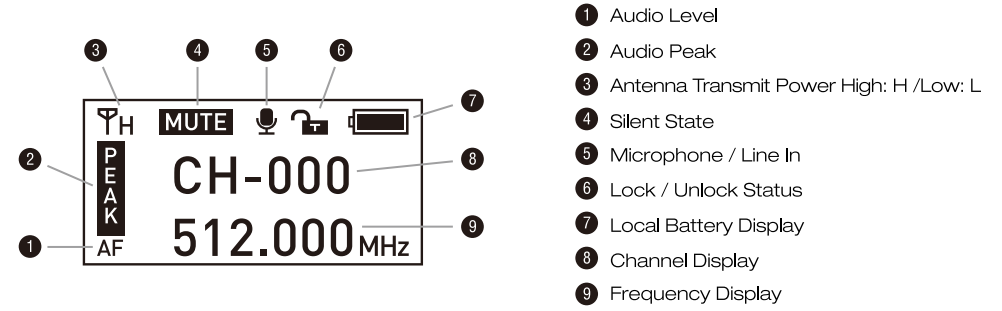
### Receivers Indicator

IR/RF	Green light long bright	Normal working state
	Green light twinkle	No received signal
A RF / PEAK	Red light long bright	Audio peak
PEAK	Red light long bright	Audio peak



# Operating Instructions

## ST100

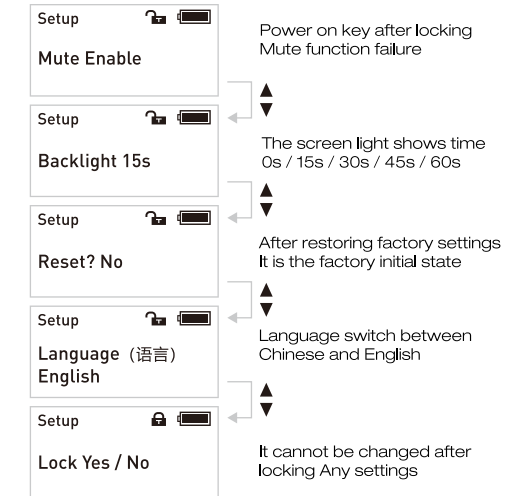
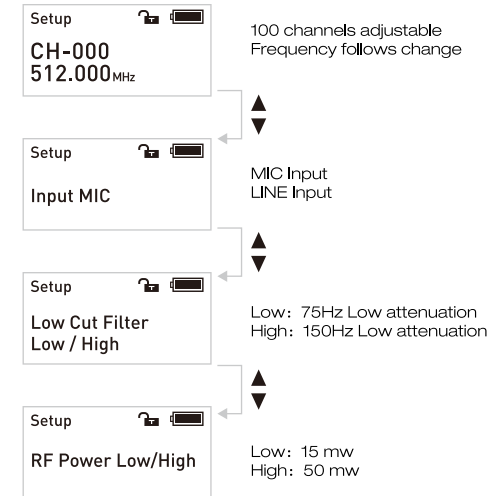


### Function Key Indication

SET Key	Long Press	Enter the function Adjustment menu
	Short Press	① Confirm the selected function ② Exit function adjustment menu

### Transmitter Indicator

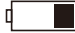
IR	Green light twinkle	Frequency matching in progress
PEAK	Red light long bright	Audio peak
AUDIO	Green light long bright	Normal recording state
	Red light long bright	Mute Mode




## Operating Instructions

### Battery display instructions

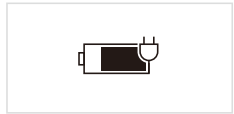
 About 70% Power

 About 30% Power

 The battery is running out and the screen is not working flashing indicates charging is required

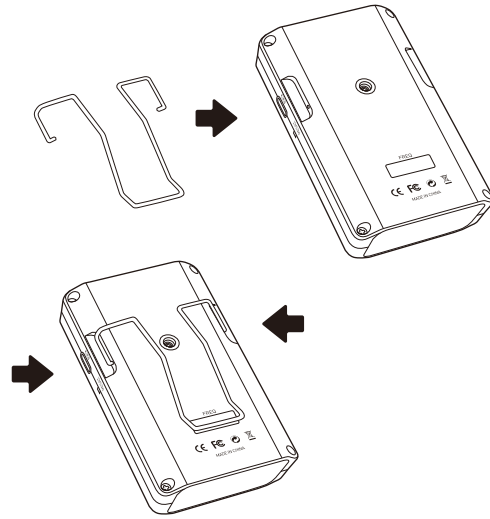


Power on charging display status



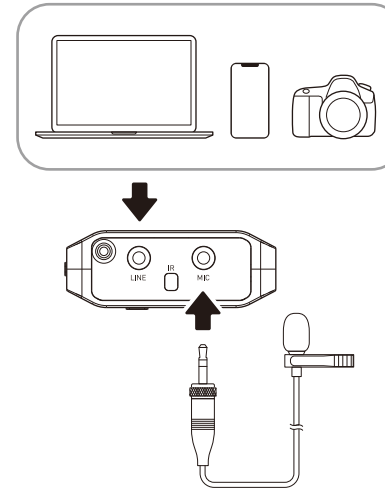
Power off charging display status

### Back clip installation

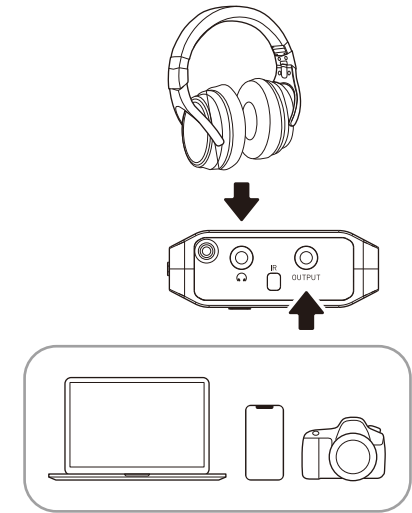


## Operating Instructions

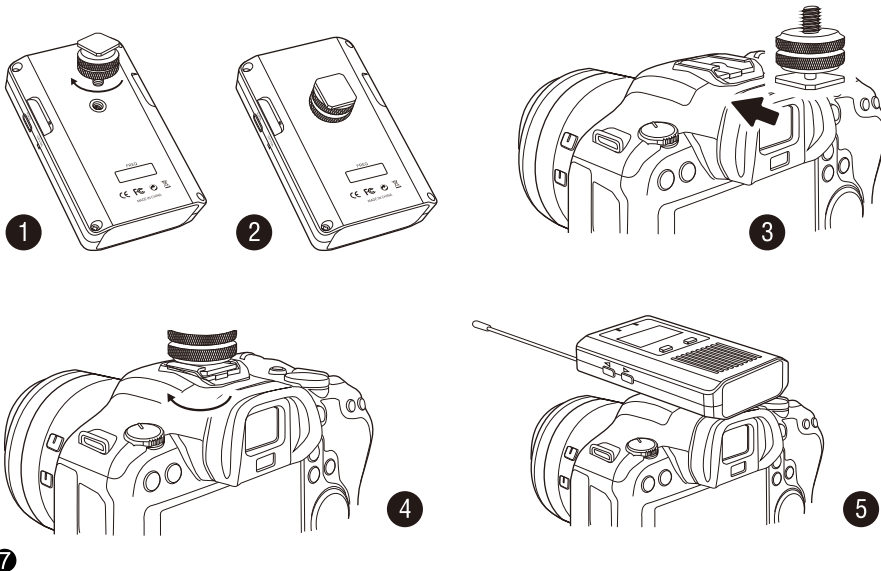
### Transmitter Connection Equipment



### Receiver Connection Equipment



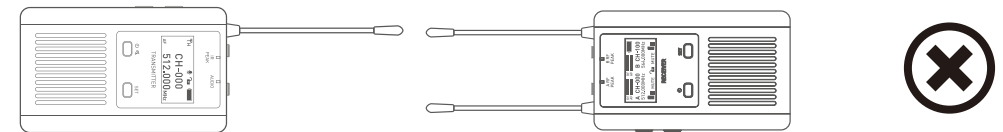
## Installation And Use Of Cold Shoes



## Paired Transmitter Attention

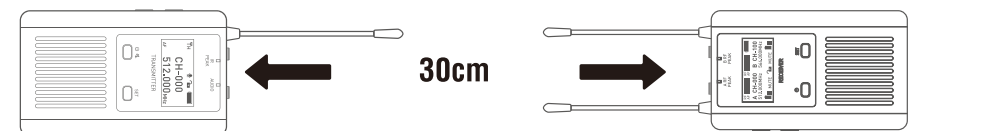
### Wrong Pairing Distance

If the pairing distance is too close and the signals interfere with each other, the screen will prompt pairing failure.



### Correct Pairing Distance

The best matching distance between transmitter and receiver is 30cm.



## Technical Data

Model	DR200
Channel	A/ B 100CHs
Wireless Frequency Range	UHF500~900MHz
Frequency Response	60Hz~15KHz
Transmitting Power	10mW(Low) / 30mW(High)
Stray Radiation	< -60dB
Audio T.H.D	< 0.5%@1KHz
High pass filter	-75Hz(Low) / -150Hz(High)
Audio Output	Mono / Stereo
Display Screen	LCD
Working Distance	In line-of-sight area(120m) / In barrier area(60m)
Power	Type-C 3.5 hours full,DC 5V@1000mA
Battery	Built-in li-ion battery,3.7V,1800mA/Hour
Working time	10Hours
Size	96x60x19mm
Operating Temperature	0-50℃
Material	Aluminum

Model	ST100
Channel	100CHs
Wireless Frequency Range	UHF500-900MHz
Frequency Response	60Hz~15KHz
Transmitter power	10mW~30mW
Stray Radiation	<-60dB
Audio T.H.D	< 0.5%@1KHz
High pass filter	-75Hz(Low) / ~150Hz(High)
Audio Output	Mono
Display Screen	LCD
Working Distance	In line-of-sight area(120m) / In barrier area(60m)
Power	Type-C 3.5 hours full,DC 5V@1000mA
Battery	Built-in li-ion battery,3.7V,1800mA/Hour
Working time	10 Hours
Size	96x60x19mm

## Precautions

### Please pay attention to the following tips when using the transmitter and receiver.

Use only transmitters and receivers with the same frequency range (see transmitters and Band label on the back of the receiver) to ensure that the required frequency is included in the attached frequency data sheet, ensure that the required frequency is allowed in the place of use, if necessary to apply for a use license.

In the factory state, the transmitter and receiver have completed pairing settings with each other, such as if the connection between the transmitter and receiver cannot be established, please re pair the settings standby channel.

### Usage suggestions

Properly modulate and connect the transmitter and receiver to obtain the best sound effect.

### For best reception

The signal range of the transmitter and receiver depends on the conditions of the place of use, and may be between 5m and 100m; there should be no obstruction between transmitter and receiver. Obstacle of line of sight, the distance between transmitter and receiver shall be kept at a maximum of 2m. Small spacing, which can avoid overshoot of the radio signal of the receiver.

### Operation for multi-channel devices

When using multiple transmitters, avoid transmission lines formed by short transmitter spacing. The channel interference shall be kept at least 50 cm between each transmitter and receiver distance.

## Warranty Card

### Customer Information

Customer Name	Contact No.
Address	

### Sales Manager

Sales Date	Dealer
Dealer Contact No.	

### #1 Maintenance Record

Service Date	Signature of Repairman
Cause of Problem	
Service Result:	<input type="checkbox"/> Solved <input type="checkbox"/> Unsolved <input type="checkbox"/> Refunded/ Replaced